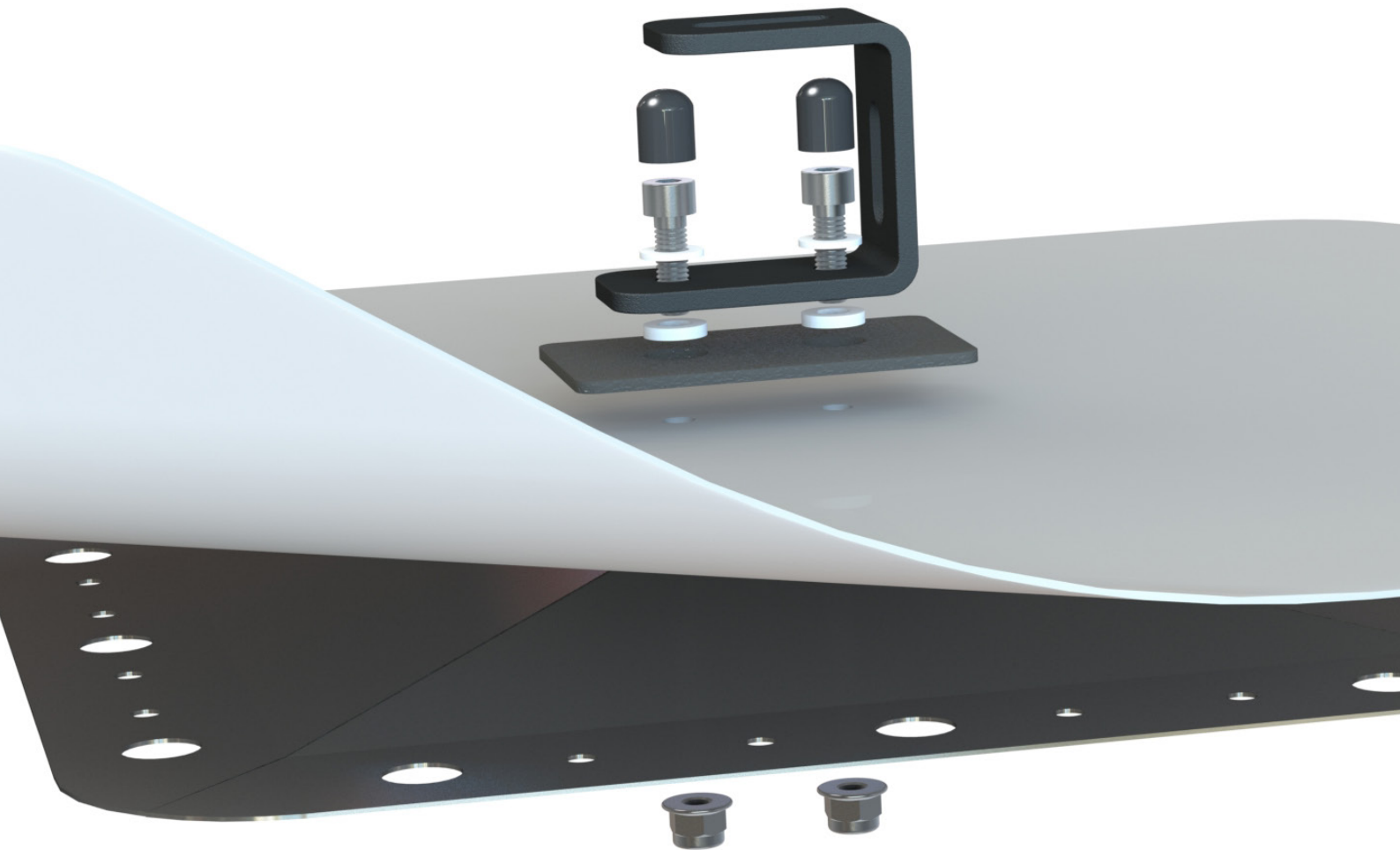




HOOK **PLATE 3.8**



R3 Bourton Industrial Park, Bourton on the Water, Glos, GL54 2HQ, UK

Tel: +44 1451 824 312

Email: info@sunfixings.co.uk

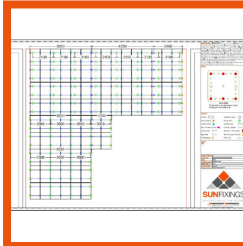
WWW.SUNFIXINGS.CO.UK

V022021

2

Layout & positioning the Hook Plates

Tools & Items Required



Layout



Tape Measure



String Line



Hook Plate

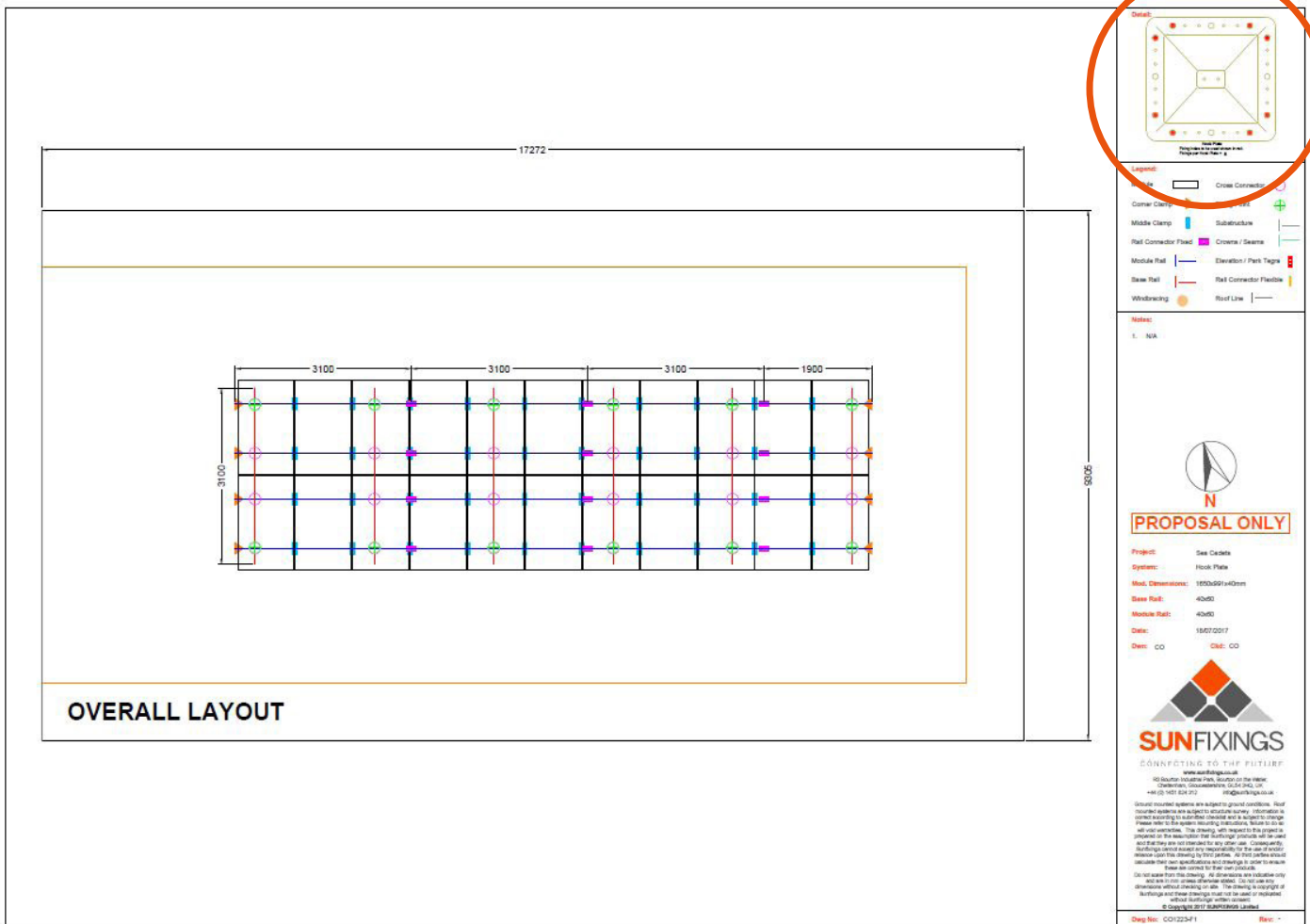


Marker

Use the layout to confirm the position of the Hook Plates.

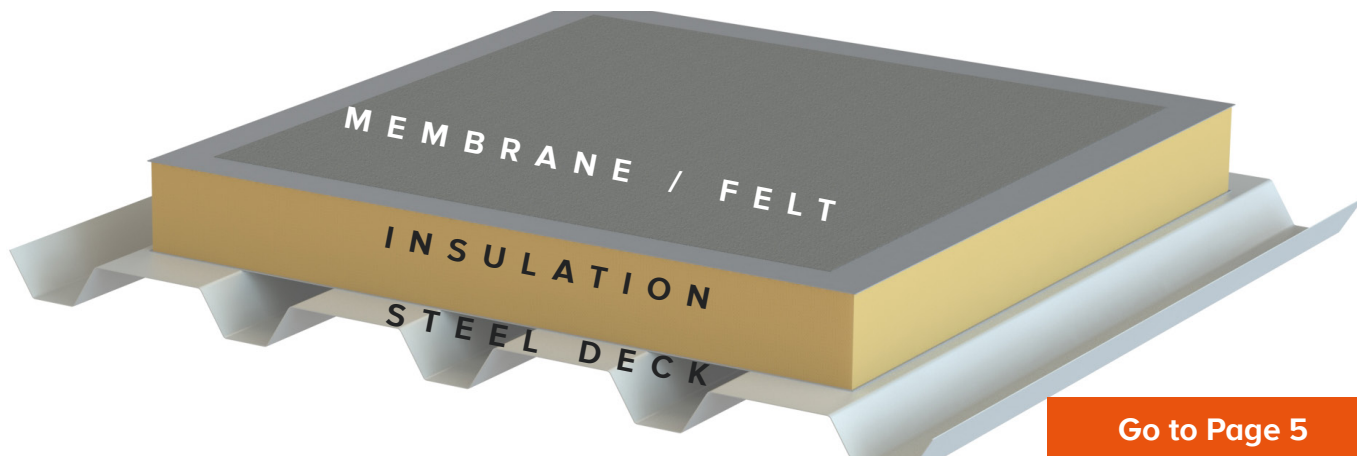
Mark on the roof the position of the fixing holes.

FIXING HOLES



3

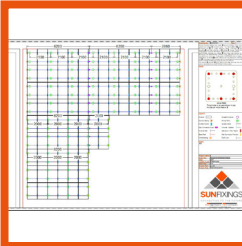
Choose type of roof build-up & installation method



4

Connecting the Hook Plate to the roof - Plywood

Tools & Items Required



Layout



Battery Drill
(NOT Impactor)



Screw Bit

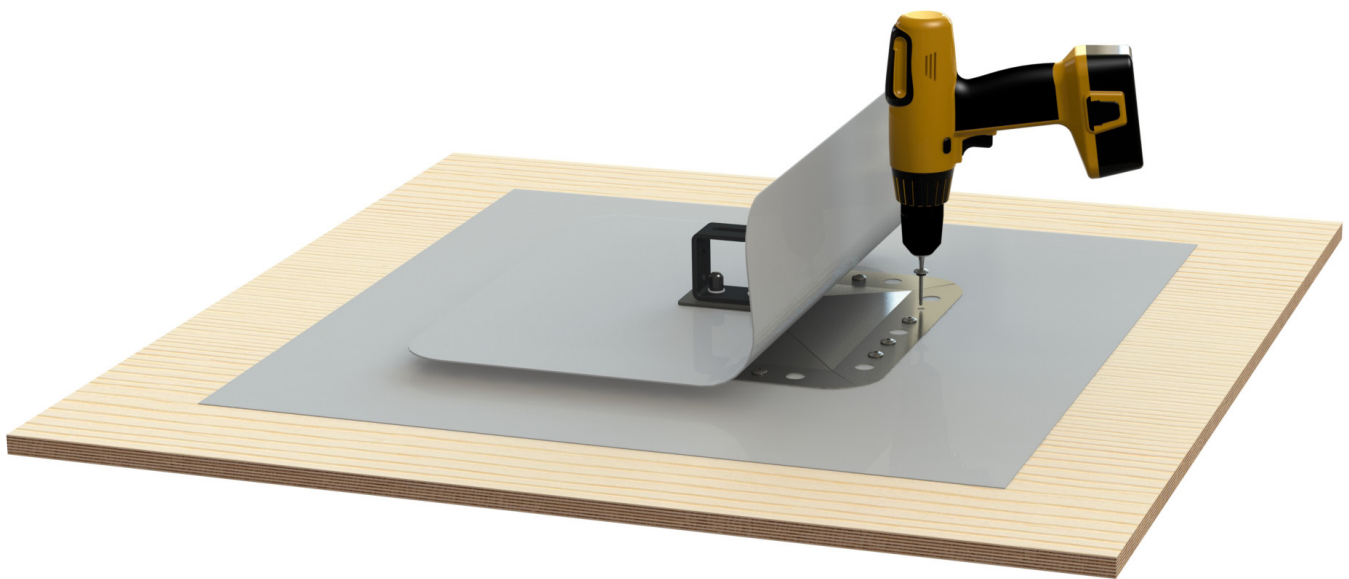


Hook Plate

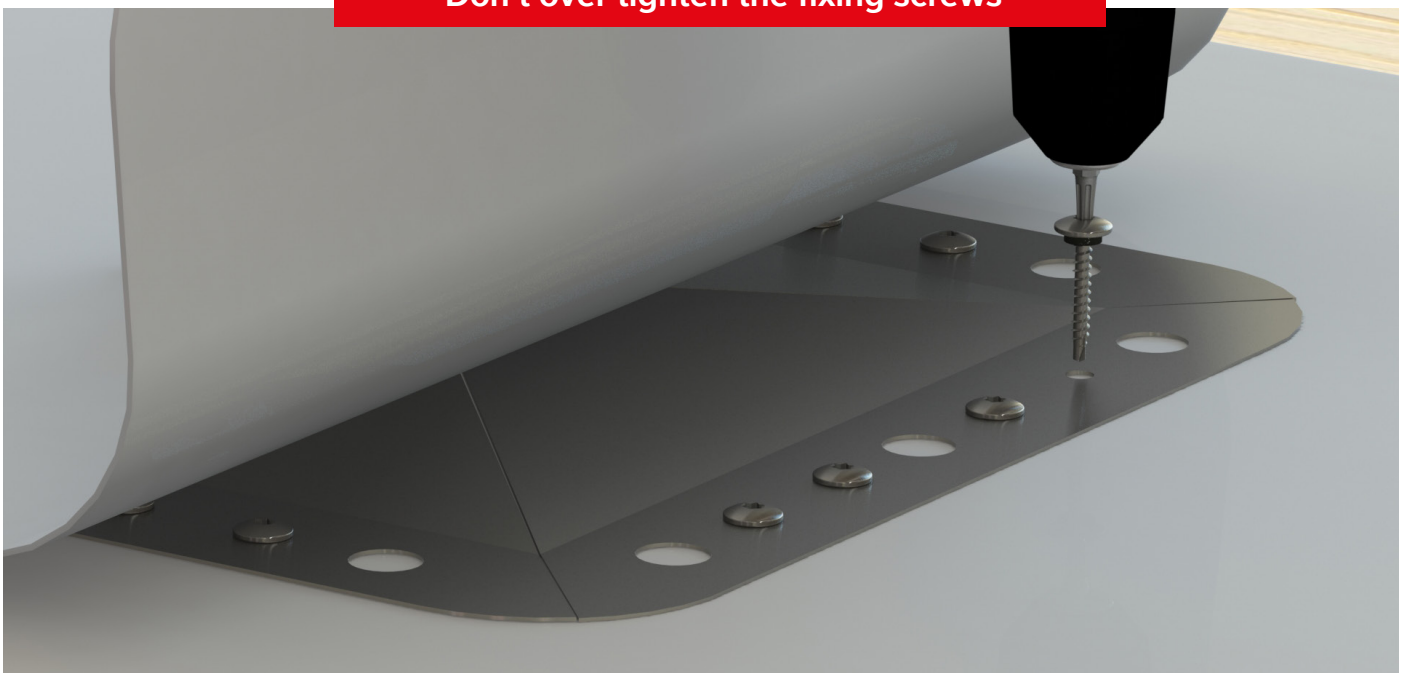


Fixing Screw

Use the layout to confirm the position of the fixing holes in the Hook Plate.



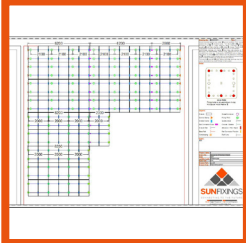
Don't over tighten the fixing screws



5

Connecting the Hook Plate with the roof - with insulation

Tools & Items Required



Layout



Battery Drill
(NOT Impactor)



Screw Bit



Hook Plate

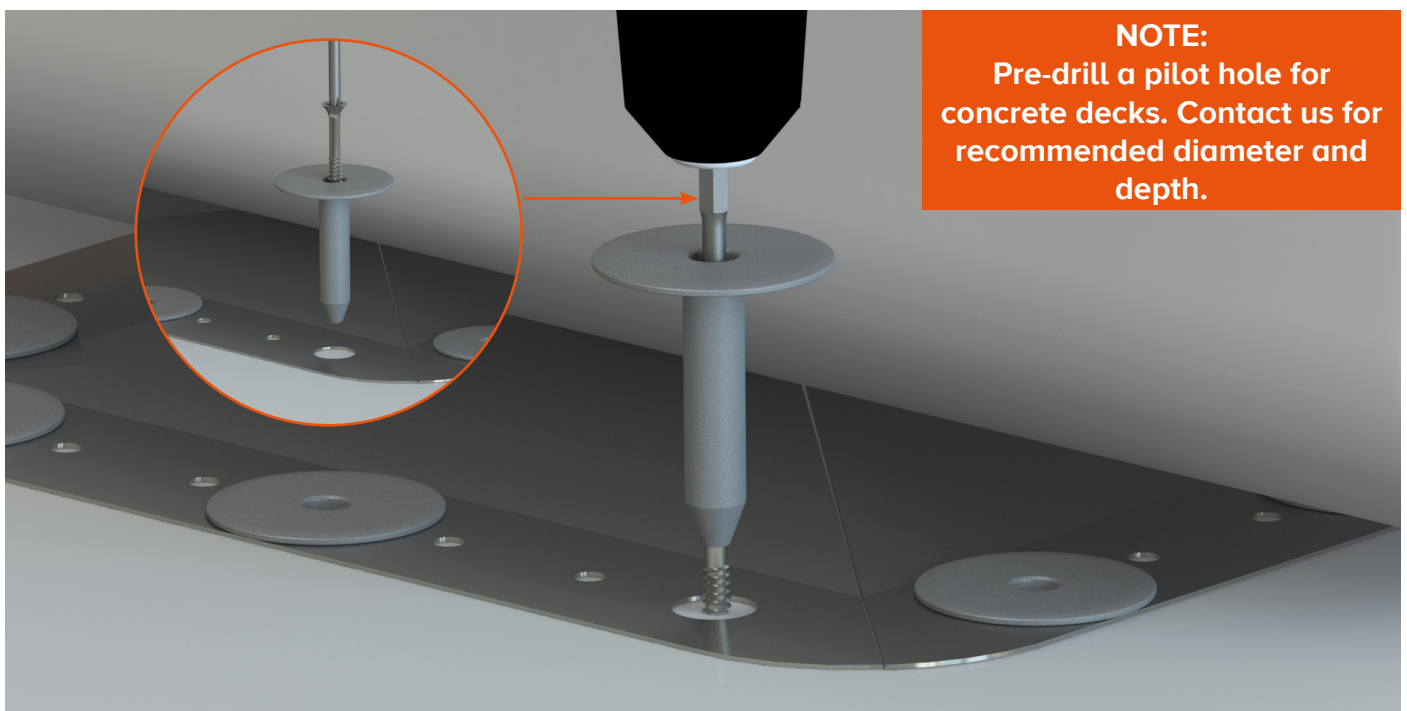
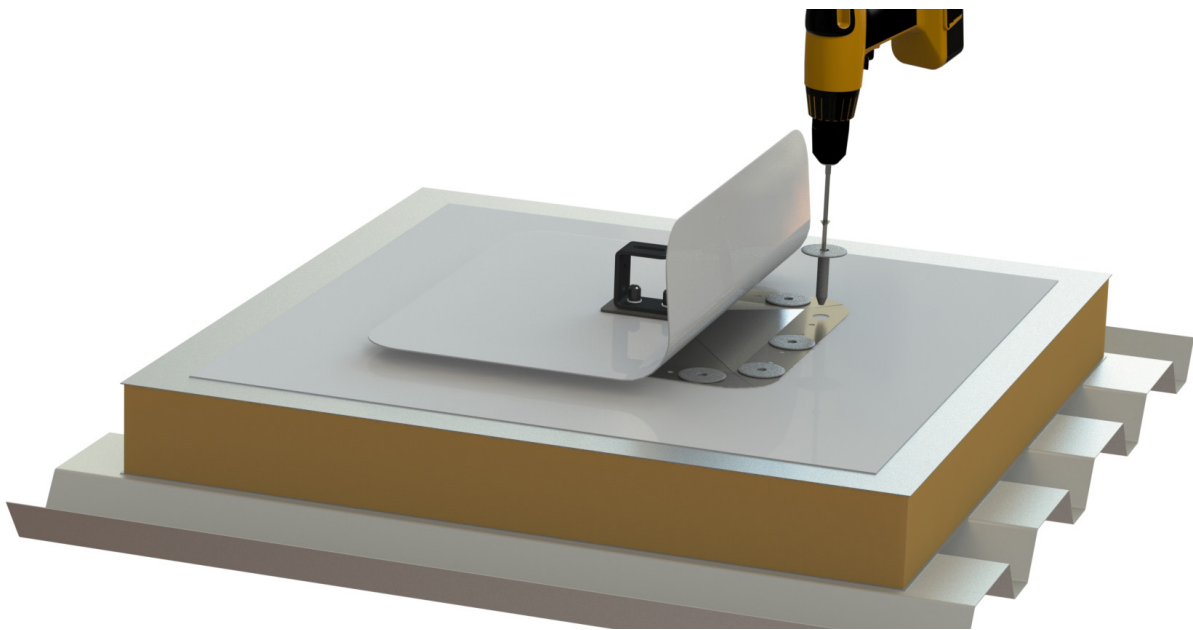


Fixing Screw



Thermal Tube

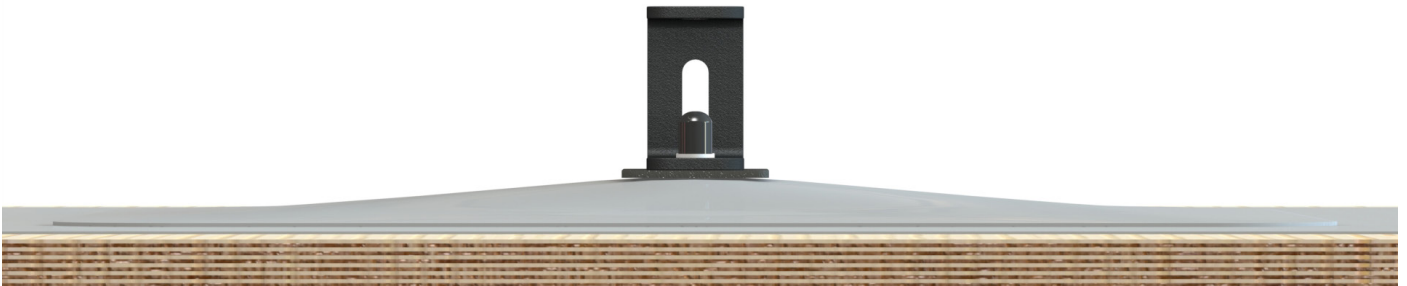
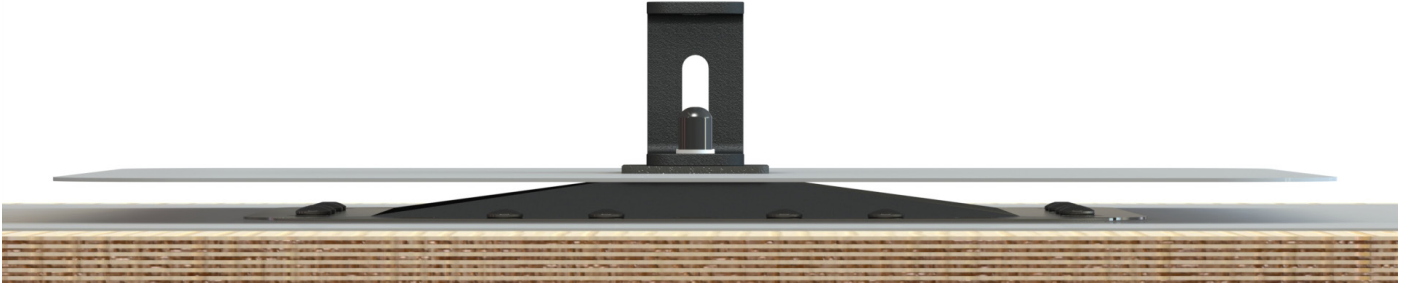
Use the layout to confirm the position of the fixing holes in the Hook Plate.



6

Attaching the additional roof covering to the roof

A qualified Roofer needs to hot weld the additional roof coverings to the existing roof to seal the Hook Plate.



7

Connect the Mounting Rail to the Hook Plate

Tools & Items Required



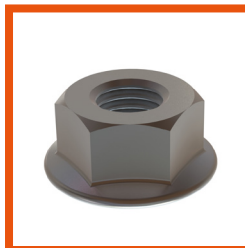
15mm Spanner



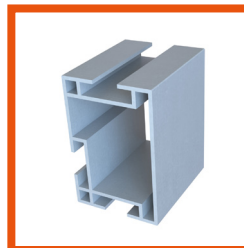
Hook Plate



M10 T Bolt



M10 Serrated
Nut

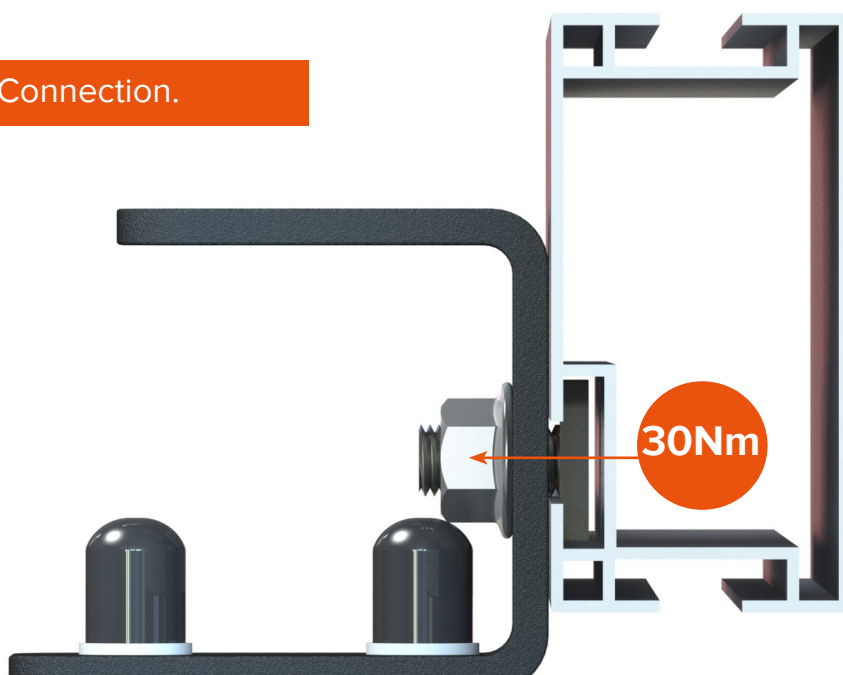


Mounting Rail

Standard Connection.



Side Connection.



8

Connect the Mounting Rail to the Hook Plate Plus

Tools & Items Required



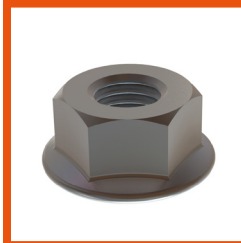
15mm Spanner



Hook Plate Plus



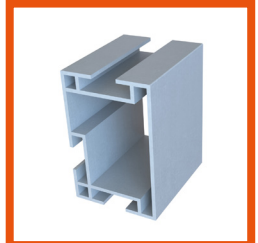
M8x25 T Bolt



M8 Hexagon
Flange Nut



M9x28x3
Washer



Mounting Rail

Double Connection.

